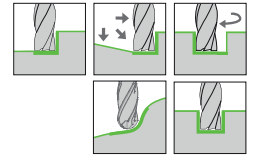
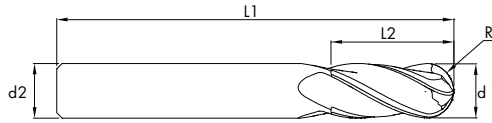
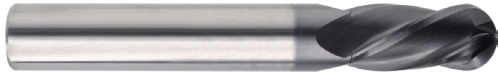


SOLID CARBIDE BALL NOSE END MILLS

VOLLHARTMETALL RADIUSFRASER

KARBÜR KÜRE FREZE



BLITZ
 <52 HRC

END MILL
FRÄSER

TYPE

MG-10

QUALITY

d1

DIAMETER

DIN
6528

NORM

4 FLUTES

DIN
6535
HA

SHAFT TYPE

HELICAL

R

RADIUS

nAco
MULTILAYER

COATED

d1(e8)	L2	L1	d2(h6)	Z	R	Uncoated Code	Coated Code	d1(e8)	L2	L1	d2(h6)	Z	R	Uncoated Code	Coated Code
2	6	40	3	2	1	4002000	4002010	12	26	83	12	3	6	4001800	4001810
3	8	40	3	2	1,5	4002020	4002030	13	26	83	13	3	6,5	4001820	4001830
4	11	50	4	2	2	4002040	4002050	14	26	83	14	3	7	4001840	4001850
5	13	50	5	2	2,5	4002060	4002070	15	32	92	15	3	7,5	4001860	4001870
6	13	57	6	2	3	4002080	4002090	16	32	92	16	3	8	4001880	4001890
7	16	60	7	2	3,5	4002100	4002110	18	32	92	18	3	9	4001900	4001910
8	19	63	8	2	4	4002120	4002130	20	38	104	20	3	10	4001920	4001930
9	19	67	9	2	4,5	4002140	4002150	22	38	104	22	3	11	4001940	4001950
10	22	72	10	2	5	4002160	4002170	24	40	110	24	3	12	4001960	4001970
11	26	83	11	2	5,5	4002180	4002190	25	40	110	25	3	12,5	4001980	4001990
12	26	83	12	2	6	4002200	4002210	2	6	40	3	4	1	4001200	4001210
13	26	83	13	2	6,5	4002220	4002230	3	8	40	3	4	1,5	4001220	4001230
14	26	83	14	2	7	4002240	4002250	4	11	50	4	4	2	4001240	4001250
15	32	92	15	2	7,5	4002260	4002270	5	13	50	5	4	2,5	4001260	4001270
16	32	92	16	2	8	4002280	4002290	6	13	57	6	4	3	4001280	4001290
18	32	92	18	2	9	4002300	4002310	7	16	60	7	4	3,5	4001300	4001310
20	38	104	20	2	10	4002320	4002330	8	19	63	8	4	4	4001320	4001330
22	38	104	22	2	11	4002340	4002350	9	19	67	9	4	4,5	4001340	4001350
24	40	110	24	2	12	4002360	4002370	10	22	72	10	4	5	4001360	4001370
25	40	110	25	2	12,5	4002380	4002390	11	26	83	11	4	5,5	4001380	4001390
2	6	40	3	3	1	4001600	4001610	12	26	83	12	4	6	4001400	4001410
3	8	40	3	3	1,5	4001620	4001630	13	26	83	13	4	6,5	4001420	4001430
4	11	50	4	3	2	4001640	4001650	14	26	83	14	4	7	4001440	4001450
5	13	50	5	3	2,5	4001660	4001670	15	32	92	15	4	7,5	4001460	4001470
6	13	57	6	3	3	4001680	4001690	16	32	92	16	4	8	4001480	4001490
7	16	60	7	3	3,5	4001700	4001710	18	32	92	18	4	9	4001500	4001510
8	19	63	8	3	4	4001720	4001730	20	38	104	20	4	10	4001520	4001530
9	19	67	9	3	4,5	4001740	4001750	22	38	104	22	4	11	4001540	4001550
10	22	72	10	3	5	4001760	4001770	24	40	110	24	4	12	4001560	4001570
11	26	83	11	3	5,5	4001780	4001790	25	40	110	25	4	12,5	4001580	4001590

				P (20-30 Hrc)			P (30-40 Hrc)			M			GG			AL			CU			Titan			< 52 HRC		
				1.0050-2 1.0060-2 1.0070-2			1.5864 1.6580 1.7225			1.4405 1.4460 1.4505			0.6035 0.7080 0.8055			3.2151 3.2373 3.2382			2.1247 2.0580 2.0598			3.7035 3.7055 3.7065			1.3255 1.3265 1.3333		
				Vc=110 m/dk.			Vc = 80 m/dk.			Vc = 60 m/dk.			Vc=130 m/dk.			Vc = 320 m/dk.			Vc = 200 m/dk.			Vc = 50 m/dk.			Vc = 50 m/dk.		
				d1	de	ap	oe	fz	n	Vf	fz	n	Vf	fz	n	Vf	fz	n	Vf	fz	n	Vf	fz	n	Vf	fz	n
2	2	1.0	1.0	0.012	17500	210xZ	0.015	12740	190xZ	0.0013	9554	125xZ	0.030	20700	620xZ	0.022	50950	1120xZ	0.025	31850	800 xZ	0.008	7960	65 xZ	0.007	7960	55 xZ
3	3	1.5	1.5	0.018	11666	210xZ	0.022	8492	190xZ	0.020	6369	125xZ	0.045	13800	620xZ	0.033	33966	1120xZ	0.038	21233	800 xZ	0.012	5306	65xZ	0.010	5306	55 xZ
4	4	2.0	2.0	0.024	8750	210xZ	0.030	6370	190xZ	0.026	4777	125xZ	0.060	10350	620xZ	0.044	25475	1120xZ	0.050	15925	800 xZ	0.016	3980	65xZ	0.014	3980	55 xZ
5	5	2.5	2.5	0.030	7000	210xZ	0.037	5100	190xZ	0.033	3822	125xZ	0.075	8280	620xZ	0.055	20380	1120xZ	0.063	12740	800 xZ	0.020	3184	65xZ	0.017	3184	55 xZ
6	6	3.0	3.0	0.036	5833	210xZ	0.045	4250	190xZ	0.039	3185	125xZ	0.090	6900	620xZ	0.066	16983	1120xZ	0.075	10616	800 xZ	0.025	2653	65xZ	0.020	2653	55 xZ
8	8	4.0	4.0	0.048	4375	210xZ	0.060	3185	190xZ	0.052	2389	125xZ	0.122	5175	620xZ	0.077	12737	1120xZ	0.100	7962	800 xZ	0.033	1990	65xZ	0.028	1990	55 xZ
10	10	5.0	5.0	0.060	3500	210xZ	0.075	2550	190xZ	0.065	1911	125xZ	0.150	4140	620xZ	0.088	10190	1120xZ	0.126	6370	800 xZ	0.041	1592	65xZ	0.035	1592	55 xZ
12	12	6.0	6.0	0.072	2916	210xZ	0.089	2123	190xZ	0.078	1592	125xZ	0.180	3450	620xZ	0.132	8492	1120xZ	0.151	5308	800 xZ	0.049	1327	65 xZ	0.041	1327	55 xZ
14	14	7.0	7.0	0.084	2500	210xZ	0.104	1820	190xZ	0.092	1365	125xZ	0.194	3204	620xZ	0.154	7278	1120xZ	0.176	4550	800 xZ	0.057	1137	65xZ	0.048	1135	55 xZ
16	16	8.0	8.0	0.096	2187	210xZ	0.119	1592	190xZ	0.105	1194	125xZ	0.240	2587	620xZ	0.176	6369	1120xZ	0.201	3981	800 xZ	0.065	995	65xZ	0.055	995	55 xZ
18	18	9.0	9.0	0.108	1944	210xZ	0.134	1415	190xZ	0.118	1062	125xZ	0.270	2300	620xZ	0.198	5661	1120xZ	0.226	3539	800 xZ	0.073	885	65xZ	0.062	885	55 xZ
20	20	10.0	10.0	0.120	1750	210xZ	0.149	1275	190xZ	0.131	955	125xZ	0.300	2070	620xZ	0.220	5095	1120xZ	0.251	3185	800 xZ	0.082	796	65xZ	0.069	796	55 xZ
25	25	12.5	12.5	0.150	1400	210xZ	0.186	1020	190xZ	0.164	764	125xZ	0.370	1656	620xZ	0.275	4076	1120xZ	0.314	2548	800 xZ	0.102	637	65xZ	0.086	637	55 xZ