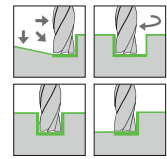
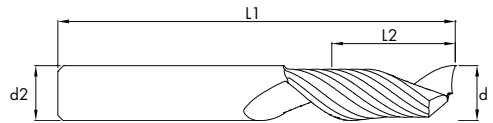


# SOLID CARBIDE END MILLS

VOLLHARTMETALLFRÄSER  
KARBÜR FREZE ALUMAX

heikenei.com



**ALUMAX**



d1(e8)	L2	L1	d2(h6)	Z	Uncoated Code	Coated Code
1	4	40	3	1	4031800	4031810
2	6	40	3	1	4031820	4031830
3	14	40	3	1	4031840	4031850
4	15	50	4	1	4031860	4031870
5	16	50	5	1	4031880	4031890
6	18	57	6	1	4031900	4031910
8	20	63	8	1	4031920	4031930
10	22	72	10	1	4031940	4031950
12	26	83	12	1	4031960	4031970
3	16	65	3	1	4031980	4031990
4	18	65	4	1	4032000	4032010
5	20	65	5	1	4032020	4032030
6	24	68	6	1	4032040	4032050
8	38	88	8	1	4032060	4032070
10	45	100	10	1	4032080	4032090
12	53	110	12	1	4032100	4032110

			AL			CU			Graphit		
			fz	n	Vf	fz	n	Vf	fz	n	Vf
			3.2151			2.1247					
			3.2373			2.0580					
			3.2382			2.0598					
			Vc = 300 m/dk.			Vc = 220 m/dk.			Vc = 500 m/dk.		
d1	ap	ae	fz	n	Vf	fz	n	Vf	fz	n	Vf
3	1,5	0,30	0,030	æ	955	0,030	23355	701	0,030	53079	1592
4	2,0	0,40	0,040	23885	955	0,040	17516	701	0,040	39809	1592
5	2,5	0,50	0,050	19108	955	0,050	14013	701	0,050	31847	1592
6	3,0	0,60	0,060	15924	955	0,060	11677	701	0,060	26539	1592
8	4,0	0,80	0,070	11943	836	0,070	8758	613	0,070	19904	1393
10	5,0	1,00	0,080	9554	764	0,080	7006	561	0,080	15924	1274
12	6,0	1,20	0,090	7962	717	0,090	5839	525	0,090	13270	1194