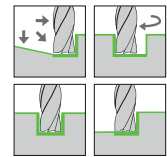
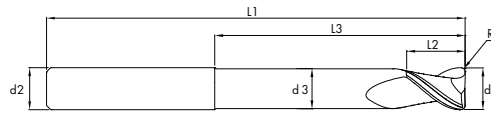


SOLID CARBIDE END MILLS WITH CORNER RADIUS

heikenei.com

VOLLHARTMETALL SCHAFTFRASER MIT ECKENRADIUS LANG

KARBÜR KÖŞE RADYÜSLÜ FREZE UZUN ALUCAST CORNER LONG



ALUCAST CORNER LONG

END MILL FRÄSER	MG-07		HEIKENEI SPECIAL					
TYPE	QUALITY	DIAMETER	NORM	2 FLUTES	SHAFT TYPE	HELICAL	CORNER RADIUS	COATED

d1(e8)	L2	d3	L3	L1	d2(h6)	Z	R	With Neck Coated Code	Without Neck Coated Code
4	6	3,8	32	65	4	2	0,5	4035790	4035800
5	7	4,8	40	80	5	2	0,5	4035810	4035820
6	8	5,7	40	80	6	2	0,5	4035830	4035840
6	8	5,7	40	80	6	2	1,0	4035850	4035860
8	10	7,6	44	88	8	2	0,5	4035870	4035880
8	10	7,6	44	88	8	2	1,0	4035890	4035900
8	10	7,6	44	88	8	2	1,5	4035910	4035920
8	10	7,6	44	88	8	2	2,0	4035930	4035940
10	14	9,5	60	100	10	2	0,5	4035950	4035960
10	14	9,5	60	100	10	2	1,0	4035970	4035980
10	14	9,5	60	100	10	2	1,5	4035990	4036000
10	14	9,5	60	100	10	2	2,0	4036010	4036020
12	16	11,5	70	110	12	2	0,5	4036030	4036040
12	16	11,5	70	110	12	2	1,0	4036050	4036060
12	16	11,5	70	110	12	2	1,5	4036070	4036080
12	16	11,5	70	110	12	2	2,0	4036090	4036100
14	18	13,5	70	110	14	2	0,5	4036110	4036120
14	18	13,5	70	110	14	2	1,0	4036130	4036140
14	18	13,5	70	110	14	2	1,5	4036150	4036160
14	18	13,5	70	110	14	2	2,0	4036170	4036180
16	20	15,5	70	110	16	2	0,5	4036190	4036200
16	20	15,5	70	110	16	2	1,0	4036210	4036220
16	20	15,5	70	110	16	2	2,0	4036230	4036240
16	20	15,5	70	110	16	2	3,0	4036250	4036260

			AL			CU			Graphit		
			1.7139 - 1.7262 1.7311 - 1.7323			1.8509 - 1.2713 1.2714 - 1.2718					
			Vc = 350 m/dk.			Vc = 300 m/dk.			Vc = 500 m/dk.		
d1	ap	ae	fz	n	Vf	fz	n	Vf	fz	n	Vf
4	2,0	0,40	0,050	23885	2389	0,040	19904	1592	0,050	35828	3583
5	2,5	0,50	0,060	19108	2293	0,050	15924	1592	0,060	28662	3439
6	3,0	0,60	0,070	15924	2229	0,050	13270	1327	0,070	23885	3344
8	4,0	0,80	0,100	11943	2389	0,080	9952	1592	0,100	17914	3583
10	5,0	1,00	0,120	9554	2293	0,110	7962	1752	0,120	14331	3439
12	6,0	1,20	0,120	7962	1911	0,110	6635	1460	0,120	11943	2866
14	7,0	1,40	0,140	6824	1911	0,120	5687	1365	0,140	10237	2866
16	8,0	1,60	0,160	5971	1911	0,140	4976	1393	0,160	8957	2866
18	9,0	1,80	0,180	5308	1911	0,160	4423	1415	0,180	7962	2866
20	10,0	2,00	0,200	4777	1911	0,180	3981	1433	0,200	7166	2866