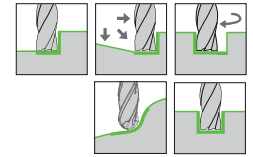
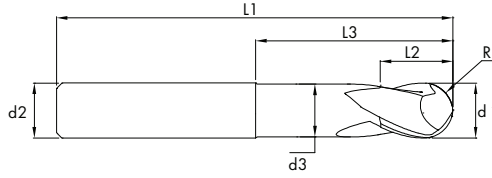


# SOLID CARBIDE BALL NOSE END MILLS

VOLLHARTMETALL RADIUSFRASER

KARBÜR KÜRE FREZE ALUCAST BALL NOSE



## ALUCAST BALL NOSE



TYPE



QUALITY



DIAMETER



NORM



2 FLUTES



SHAFT TYPE



HELICAL



RADIUS



COATED

d1(e8)	L2	d3	L3	L1	d2(h6)	Z	R	CNC R	Uncoated Code	Coated Code
4	6	3,8	25	50	4	2	2	1,986	4034730	4034740
5	7	4,8	25	50	5	2	2.5	2,486	4034750	4034760
6	8	5,7	28	57	6	2	3	2,986	4034770	4034780
8	10	7,6	32	63	8	2	4	3,982	4034790	4034800
10	14	9,5	36	72	10	2	5	4,982	4034810	4034820
12	16	11,5	42	83	12	2	6	5,977	4034830	4034840
14	18	13,5	42	83	14	2	7	6,977	4034850	4034860
16	20	15,5	46	92	16	2	8	7,977	4034870	4034880
18	22	17,5	46	92	18	2	9	8,977	4034890	4034900
20	24	19,5	52	104	20	2	10	9,972	4034910	4034920

			AL			CU			Graphit		
			1.7139 - 1.7262 1.7311 - 1.7323			1.8509 - 1.2713 1.2714 - 1.2718					
			Vc = 450 m/dk.			Vc = 400 m/dk.			Vc = 600 m/dk.		
d1	ap	ae	fz	n	Vf	fz	n	Vf	fz	n	Vf
4	2,0	0,40	0,040	35828	2866	0,030	31847	1911	0,040	47771	3822
5	2,5	0,50	0,050	28662	2866	0,040	25478	2038	0,050	38217	3822
6	3,0	0,60	0,060	23885	2866	0,050	21231	2123	0,060	31847	3822
8	4,0	0,80	0,080	17914	2866	0,070	15924	2229	0,080	23885	3822
10	5,0	1,00	0,100	14331	2866	0,090	12739	2293	0,100	19108	3822
12	6,0	1,20	0,120	11943	2866	0,110	10616	2335	0,120	15924	3822
14	7,0	1,40	0,140	10237	2866	0,120	9099	2184	0,140	13649	3822
16	8,0	1,60	0,160	8957	2866	0,140	7962	2229	0,160	11943	3822
18	9,0	1,80	0,180	7962	2866	0,160	7077	2265	0,180	10616	3822
20	10,0	2,00	0,200	7166	2866	0,180	6369	2293	0,200	9554	3822