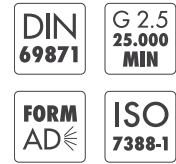
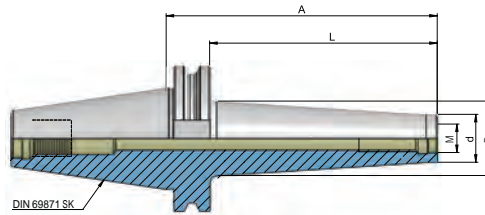
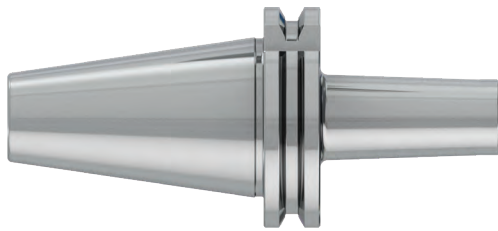


SK INDEXABLE MILLING ARBORS FOR SCREW TYPE

heikenei.com

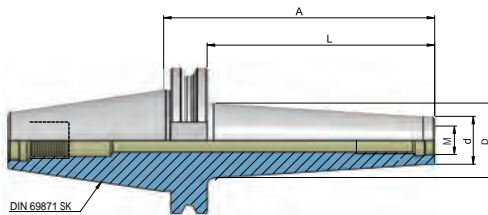
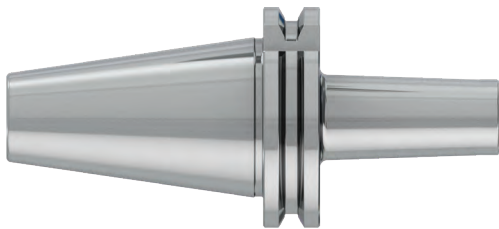
DIN ISO 7388-1 AD (DIN 69871) SK
FRÄSAUFNAHME FÜR EINSCHRAUBFRÄSER



Artikelbezeichnung Item Code	Produktname Product name	Spannbereich Capacity	d	D	L	A
HEI.S40.0806.44	SK 40 M6 - 44	M6	10	13	25	44
HEI.S40.0806.69	SK 40 M6 - 69	M6	10	20	50	69
HEI.S40.0806.94	SK 40 M6 - 94	M6	10	23	75	94
HEI.S40.0808.44	SK 40 M8 - 44	M8	13	15	25	44
HEI.S40.0808.69	SK 40 M8 - 69	M8	13	23	50	69
HEI.S40.0808.94	SK 40 M8 - 94	M8	13	23	75	94
HEI.S40.0808.119	SK 40 M8 - 119	M8	13	25	100	119
HEI.S40.0810.24	SK 40 M10 - 24	M10	18	18	5	24
HEI.S40.0810.44	SK 40 M10 - 44	M10	18	20	25	44
HEI.S40.0810.69	SK 40 M10 - 69	M10	18	23	50	69
HEI.S40.0810.94	SK 40 M10 - 94	M10	18	28	75	94
HEI.S40.0810.119	SK 40 M10 - 119	M10	18	32	100	119
HEI.S40.0810.169	SK 40 M10 - 169	M10	18	36	150	169
HEI.S40.0812.24	SK 40 M12 - 24	M12	21	21	5	24
HEI.S40.0812.44	SK40 M12 - 44	M12	21	24	25	44
HEI.S40.0812.69	SK 40 M12 - 69	M12	21	27	50	69
HEI.S40.0812.94	SK 40 M12 - 94	M12	21	30	75	94
HEI.S40.0812.119	SK 40 M12 - 119	M12	21	33	100	119
HEI.S40.0812.144	SK 40 M12 - 144	M12	21	36	125	144
HEI.S40.0812.169	SK 40 M12 - 169	M12	21	40	150	169
HEI.S40.0816.24	SK 40 M16 - 24	M16	29	29	5	24
HEI.S40.0816.44	SK 40 M16 - 44	M16	29	29	25	44
HEI.S40.0816.69	SK 40 M16 - 69	M16	29	32	50	69
HEI.S40.0816.94	SK 40 M16 - 94	M16	29	34	75	94
HEI.S40.0816.119	SK 40 M16 - 119	M16	29	36	100	119
HEI.S40.0816.144	SK 40 M16 - 144	M16	29	40	125	144
HEI.S40.0816.169	SK 40 M16 - 169	M16	29	42	150	169

SK INDEXABLE MILLING ARBORS FOR SCREW TYPE

DIN ISO 7388-1 AD (DIN 69871) SK
FRÄSAUFNAHME FÜR EINSCHRAUBFRÄSER



Artikelbezeichnung Item Code	Produktname Product name	Spannbereich Capacity	d	D	L	A
HEI.S50.0806.69	SK 50 M6 - 69	M6	13	23	50	69
HEI.S50.0806.119	SK 50 M6 - 119	M6	13	25	100	119
HEI.S50.0806.169	SK 50 M6 - 169	M6	13	30	150	169
HEI.S50.0808.69	SK 50 M8 - 69	M8	13	23	50	69
HEI.S50.0808.119	SK 50 M8 - 119	M8	13	25	100	119
HEI.S50.0808.169	SK 50 M8 - 169	M8	13	30	150	169
HEI.S50.0810.69	SK 50 M10 - 69	M10	18	23	50	69
HEI.S50.0810.119	SK 50 M10 - 119	M10	18	32	100	119
HEI.S50.0810.169	SK 50 M10 - 169	M10	18	36	150	169
HEI.S50.0812.69	SK 50 M12 - 69	M12	21	24	50	69
HEI.S50.0812.119	SK 50 M12 - 119	M12	21	33	100	119
HEI.S50.0812.169	SK 50 M12 - 169	M12	21	40	150	169
HEI.S50.0816.69	SK 50 M16 - 69	M16	29	34	50	69
HEI.S50.0816.119	SK 50 M16 - 119	M16	29	36	100	119
HEI.S50.0816.169	SK 50 M16 - 169	M16	29	42	150	169