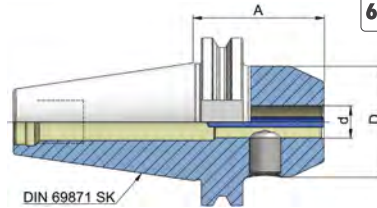
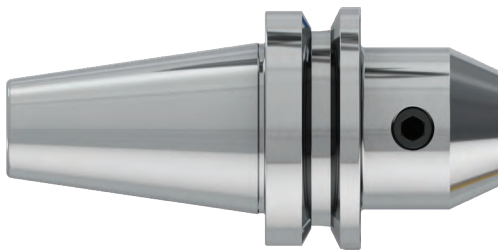


SK END MILL HOLDER DIN 6359 FOR WELDON DIN 1835-B WITH COOLANT K

DIN ISO 7388-1 AD (DIN 69871) SK

FRÄSERAUFNAHME DIN 6359 ZYLINDERSCHÄFTE DIN 1835-B MIT KÜHLMITTEL



DIN
69871

G 2.5
25.000
MIN

COOLANT

FORM
AD

ISO
7388-1



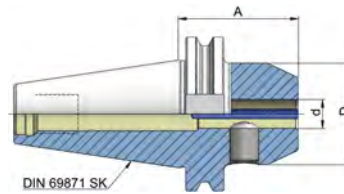
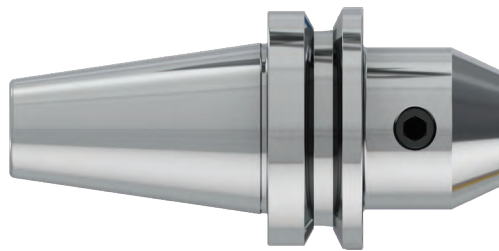
Artikelbezeichnung Item Code	Produktname Product name	Spannbereich Capacity	D	L	A
HEI.S40.0206.50K	SK 40 6 - 50 - K	6	25	31	50
HEI.S40.0206.100K	SK 40 6 - 100 - K	6	25	81	100
HEI.S40.0208.50K	SK 40 8 - 50 - K	8	28	31	50
HEI.S40.0208.100K	SK 40 8 - 100 - K	8	28	81	100
HEI.S40.0210.50K	SK 40 10 - 50 - K	10	35	31	50
HEI.S40.0210.100K	SK 40 10 - 100 - K	10	35	81	100
HEI.S40.0212.50K	SK 40 12 - 50 - K	12	42	31	50
HEI.S40.0212.100K	SK 40 12 - 100 - K	12	42	81	100
HEI.S40.0214.50K	SK 40 14 - 50 - K	14	45	31	50
HEI.S40.0214.100K	SK 40 14 - 100 - K	14	45	81	100
HEI.S40.0216.63K	SK 40 16 - 63 - K	16	48	44	63
HEI.S40.0216.100K	SK 40 16 - 100 - K	16	48	81	100
HEI.S40.0218.63K	SK 40 18 - 63 - K	18	50	44	63
HEI.S40.0218.100K	SK 40 18 - 100 - K	18	50	81	100
HEI.S40.0218.160K	SK 40 18 - 160 - K	18	50	141	160
HEI.S40.0220.63K	SK 40 20 - 63 - K	20	52	44	63
HEI.S40.0220.100K	SK 40 20 - 100 - K	20	52	81	100
HEI.S40.0225.100K	SK 40 25 - 100 - K	25	63	81	100
HEI.S40.0232.100K	SK 40 32 - 100 - K	32	72	81	100
HEI.S40.0240.120K	SK 40 40 - 120 - K	40	80	101	120

SK END MILL HOLDER DIN 6359 FOR WELDON DIN 1835-B WITH COOLANT K

heikenei.com

DIN ISO 7388-1 AD (DIN 69871) SK

FRÄSERAUFNAHME DIN 6359 ZYLINDERSCHÄFTE DIN 1835-B MIT KÜHLMITTEL



DIN
69871

G 2.5
25.000
MIN

COOLANT

FORM
AD

ISO
7388-1



Artikelbezeichnung Item Code	Produktname Product name	Spannbereich Capacity	D	L	A
HEI.S50.0206.63K	SK 50 6 - 63 - K	6	25	44	63
HEI.S50.0206.100K	SK 50 6 - 100 - K	6	25	81	100
HEI.S50.0208.63K	SK 50 8 - 63 - K	8	28	44	63
HEI.S50.0208.100K	SK 50 8 - 100 - K	8	28	81	100
HEI.S50.0210.63K	SK 50 10 - 63 - K	10	35	44	63
HEI.S50.0210.100K	SK 50 10 - 100 - K	10	35	81	100
HEI.S50.0212.63K	SK 50 12 - 63 - K	12	42	44	63
HEI.S50.0212.100K	SK 50 12 - 100 - K	12	42	81	100
HEI.S50.0214.63K	SK 50 14 - 63 - K	14	45	44	63
HEI.S50.0214.100K	SK 50 14 - 100 - K	14	45	81	100
HEI.S50.0216.63K	SK 50 16 - 63 - K	16	48	44	63
HEI.S50.0216.100K	SK 50 16 - 100 - K	16	48	81	100
HEI.S50.0218.63K	SK 50 18 - 63 - K	18	50	44	63
HEI.S50.0218.100K	SK 50 18 - 100 - K	18	50	81	100
HEI.S50.0220.63K	SK 50 20 - 63 - K	20	52	44	63
HEI.S50.0220.100K	SK 50 20 - 100 - K	20	52	81	100
HEI.S50.0225.80K	SK 50 25 - 80 - K	25	65	61	80
HEI.S50.0225.120K	SK 50 25 - 120 - K	25	65	101	120
HEI.S50.0232.100K	SK 50 32 - 100 - K	32	72	81	100
HEI.S50.0240.100K	SK 50 40 - 100 - K	40	80	81	100