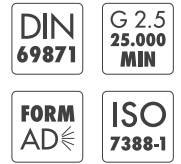
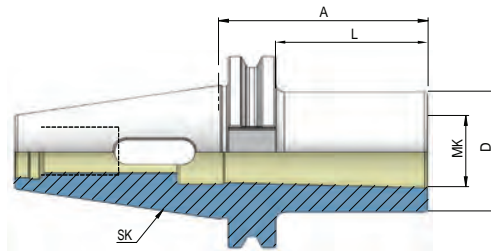
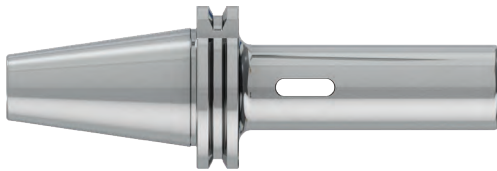


SK MORSE TAPER ADAPTOR DIN 6383

DIN ISO 7388-1 AD (DIN 69871) SK

ZWISCHENHÜLSE FÜR MK MIT ANZUGSGEWINDE DIN 6364



| Artikelbezeichnung Item Code | Produktname Product name | MK | D | L | A |
|---------------------------------|-----------------------------|----|----|-----|-----|
| HEI.S30.0501.50 | SK 30 1 - 50 | 1 | 25 | 31 | 50 |
| HEI.S30.0502.65 | SK 30 2 - 65 | 2 | 32 | 46 | 65 |
| HEI.S30.0503.80 | SK 30 3 - 80 | 3 | 40 | 61 | 80 |
| HEI.S40.0501.50 | SK 40 1 - 50 | 1 | 25 | 31 | 50 |
| HEI.S40.0502.50 | SK 40 2 - 50 | 2 | 32 | 31 | 50 |
| HEI.S40.0502.117 | SK 40 2 - 117 | 2 | 32 | 98 | 117 |
| HEI.S40.0503.70 | SK 40 3 - 70 | 3 | 40 | 51 | 70 |
| HEI.S40.0503.133 | SK 40 3 - 133 | 3 | 40 | 114 | 133 |
| HEI.S40.0504.95 | SK 40 4 - 95 | 4 | 48 | 76 | 95 |
| HEI.S40.0504.156 | SK 40 4 - 156 | 4 | 48 | 137 | 156 |
| HEI.S50.0501.45 | SK 50 1 - 45 | 1 | 25 | 26 | 45 |
| HEI.S50.0502.60 | SK 50 2 - 60 | 2 | 32 | 41 | 60 |
| HEI.S50.0502.117 | SK 50 2 - 117 | 2 | 32 | 98 | 117 |
| HEI.S50.0503.65 | SK 50 3 - 65 | 3 | 40 | 46 | 65 |
| HEI.S50.0503.137 | SK 50 3 - 137 | 3 | 40 | 118 | 137 |
| HEI.S50.0504.95 | SK 50 4 - 95 | 4 | 48 | 76 | 95 |
| HEI.S50.0504.167 | SK 50 4 - 167 | 4 | 48 | 148 | 167 |
| HEI.S50.0505.105 | SK 50 5 - 105 | 5 | 63 | 86 | 105 |
| HEI.S50.0505.197 | SK 50 5 - 197 | 5 | 63 | 178 | 197 |