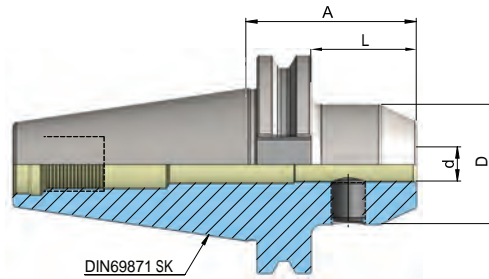
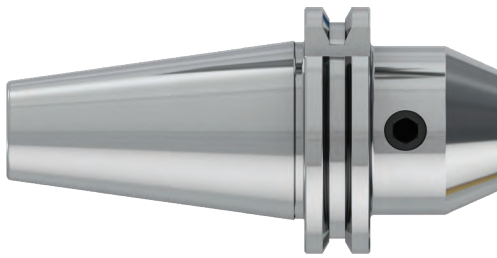


SK END MILL HOLDER DIN 6359 FOR WELDON DIN 1835-B

DIN ISO 7388-1 AD (DIN 69871) SK

FRASERAUFNAHME DIN 6359 ZYLINDERSCHAFTE DIN 1835-B



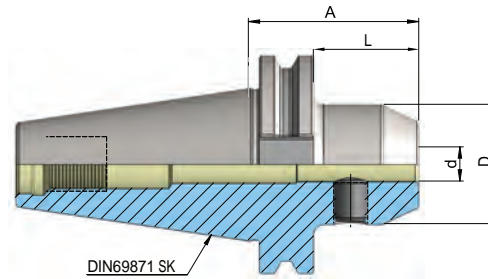
Artikelbezeichnung Item Code	Produktname Product name	Spannbereich Capacity	D	L	A
HEI.S30.0206.50	SK 30 6 - 50	6	25	31	50
HEI.S30.0208.50	SK 30 8 - 50	8	28	31	50
HEI.S30.0210.50	SK 30 10 - 50	10	35	31	50
HEI.S30.0212.50	SK 30 12 - 50	12	42	31	50
HEI.S30.0214.63	SK 30 14 - 63	14	44	44	63
HEI.S30.0216.63	SK 30 16 - 63	16	48	44	63
HEI.S30.0218.63	SK 30 18 - 63	18	50	44	63
HEI.S30.0220.70	SK 30 20 - 70	20	52	51	70
HEI.S40.0206.50	SK 40 6 - 50	6	25	31	50
HEI.S40.0206.100	SK 40 6 - 100	6	25	81	100
HEI.S40.0206.130	SK 40 6 - 130	6	25	111	130
HEI.S40.0206.160	SK 40 6 - 160	6	25	141	160
HEI.S40.0208.50	SK 40 8 - 50	8	28	31	50
HEI.S40.0208.100	SK 40 8 - 100	8	28	81	100
HEI.S40.0208.130	SK 40 8 - 130	8	28	111	130
HEI.S40.0208.160	SK 40 8 - 160	8	28	141	160
HEI.S40.0210.50	SK 40 10 - 50	10	35	31	50
HEI.S40.0210.100	SK 40 10 - 100	10	35	81	100
HEI.S40.0210.130	SK 40 10 - 130	10	35	111	130
HEI.S40.0210.160	SK 40 10 - 160	10	35	141	160
HEI.S40.0212.50	SK 40 12 - 50	12	42	31	50
HEI.S40.0212.100	SK 40 12 - 100	12	42	81	100
HEI.S40.0212.130	SK 40 12 - 130	12	42	111	130
HEI.S40.0212.160	SK 40 12 - 160	12	42	141	160

SK END MILL HOLDER DIN 6359 FOR WELDON DIN 1835-B

heikenei.com

DIN ISO 7388-1 AD (DIN 69871) SK

FRASERAUFNAHME DIN 6359 ZYLINDERSCHAFFE DIN 1835-B

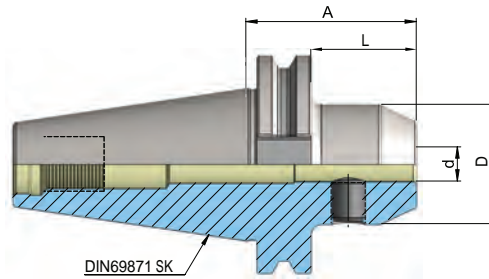


Artikelbezeichnung Item Code	Produktname Product name	Spannbereich Capacity	D	L	A
HEI.S40.0214.50	SK 40 14 - 50	14	45	31	50
HEI.S40.0214.100	SK 40 14 - 100	14	45	81	100
HEI.S40.0214.160	SK 40 14 - 160	14	45	141	160
HEI.S40.0216.35	SK 40 16 - 35	16	45	16	35
HEI.S40.0216.63	SK 40 16 - 63	16	48	44	63
HEI.S40.0216.100	SK 40 16 - 100	16	48	81	100
HEI.S40.0216.130	SK 40 16 - 130	16	48	111	130
HEI.S40.0216.160	SK 40 16 - 160	16	48	141	160
HEI.S40.0218.63	SK 40 18 - 63	18	50	44	63
HEI.S40.0218.100	SK 40 18 - 100	18	50	81	100
HEI.S40.0218.160	SK 40 18 - 160	18	50	141	160
HEI.S40.0220.35	SK 40 20 - 35	20	45	16	35
HEI.S40.0220.63	SK 40 20 - 63	20	52	44	63
HEI.S40.0220.100	SK 40 20 - 100	20	52	81	100
HEI.S40.0220.130	SK 40 20 - 130	20	52	111	130
HEI.S40.0220.160	SK 40 20 - 160	20	52	141	160
HEI.S40.0225.35	SK 40 25 - 35	25	45	16	35
HEI.S40.0225.100	SK 40 25 - 100	25	63	81	100
HEI.S40.0225.160	SK 40 25 - 160	25	63	141	160
HEI.S40.0232.65	SK 40 32 - 65	32	63	46	65
HEI.S40.0232.100	SK 40 32 - 100	32	72	81	100
HEI.S40.0232.160	SK 40 32 - 160	32	72	141	160
HEI.S40.0240.120	SK 40 40 - 120	40	80	101	120

SK END MILL HOLDER DIN 6359 FOR WELDON DIN 1835-B

DIN ISO 7388-1 AD (DIN 69871) SK

FRASERAUFNAHME DIN 6359 ZYLINDERSCHAFTE DIN 1835-B



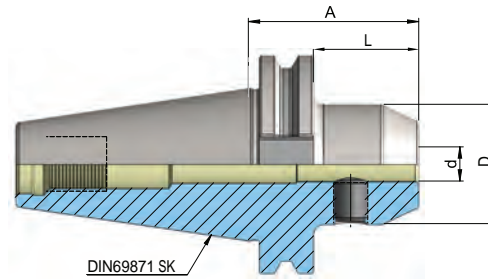
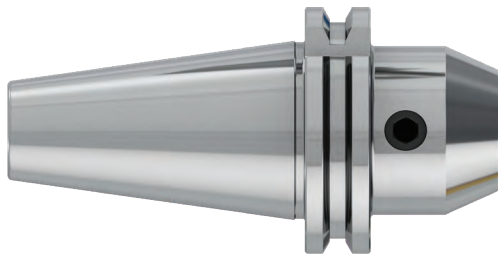
Artikelbezeichnung Item Code	Produktname Product name	Spannbereich Capacity	D	L	A
HEI.S50.0206.63	SK 50 6 - 63	6	25	44	63
HEI.S50.0206.100	SK 50 6 - 100	6	25	81	100
HEI.S50.0206.130	SK 50 6 - 130	6	25	111	130
HEI.S50.0206.160	SK 50 6 - 160	6	25	141	160
HEI.S50.0208.63	SK 50 8 - 63	8	28	44	63
HEI.S50.0208.100	SK 50 8 - 100	8	28	81	100
HEI.S50.0208.130	SK 50 8 - 130	8	28	111	130
HEI.S50.0208.160	SK 50 8 - 160	8	28	141	160
HEI.S50.0210.63	SK 50 10 - 63	10	35	44	63
HEI.S50.0210.100	SK 50 10 - 100	10	35	81	100
HEI.S50.0210.130	SK 50 10 - 130	10	35	111	130
HEI.S50.0210.160	SK 50 10 - 160	10	35	141	160
HEI.S50.0212.63	SK 50 12 - 63	12	42	44	63
HEI.S50.0212.100	SK 50 12 - 100	12	42	81	100
HEI.S50.0212.130	SK 50 12 - 130	12	42	111	130
HEI.S50.0212.160	SK 50 12 - 160	12	42	141	160
HEI.S50.0214.63	SK 50 14 - 63	14	45	44	63
HEI.S50.0214.100	SK 50 14 - 100	14	45	81	130
HEI.S50.0214.160	SK 50 14 - 160	14	45	141	160

SK END MILL HOLDER DIN 6359 FOR WELDON DIN 1835-B

heikenei.com

DIN ISO 7388-1 AD (DIN 69871) SK

FRASERAUFNAHME DIN 6359 ZYLINDERSCHAFTE DIN 1835-B



Artikelbezeichnung Item Code	Produktname Product name	Spannbereich Capacity	D	L	A
HEI.S50.0216.63	SK 50 16 - 63	16	48	44	63
HEI.S50.0216.100	SK 50 16 - 100	16	48	81	100
HEI.S50.0216.130	SK 50 16 - 130	16	48	111	130
HEI.S50.0216.160	SK 50 16 - 160	16	48	141	160
HEI.S50.0218.63	SK 50 18 - 63	18	50	44	63
HEI.S50.0218.100	SK 50 18 - 100	18	50	81	100
HEI.S50.0218.160	SK 50 18 - 160	18	50	141	160
HEI.S50.0220.63	SK 50 20 - 63	20	52	44	63
HEI.S50.0220.100	SK 50 20 - 100	20	52	81	100
HEI.S50.0220.130	SK 50 20 - 130	20	52	111	130
HEI.S50.0220.160	SK 50 20 - 160	20	52	141	160
HEI.S50.0225.80	SK 50 25 - 80	25	65	61	80
HEI.S50.0225.130	SK 50 25 - 130	25	65	111	130
HEI.S50.0225.160	SK 50 25 - 160	25	65	141	160
HEI.S50.0232.100	SK 50 32 - 100	32	72	81	100
HEI.S50.0232.160	SK 50 32 - 160	32	72	141	160
HEI.S50.0240.100	SK 50 40 - 100	40	80	81	100
HEI.S50.0240.160	SK 50 40 - 160	40	80	141	160