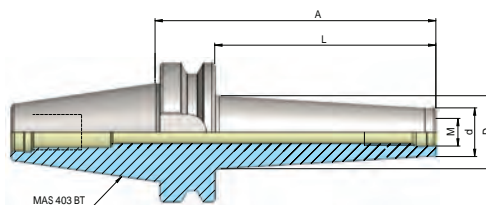
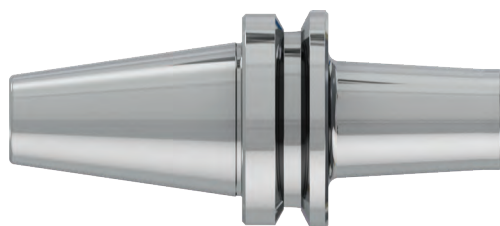


BT ARBORS FOR MODULAR (SCREW TYPE) INDEXABLE END MILLS

heikenei.com

DIN ISO 7388-2 AD (JIS B 6339 MAS 403 BT)

FRÄSAUFNAHME FÜR EINSCHRAUBFRÄSER



JIS B
6339

G 2.5
25.000
MIN

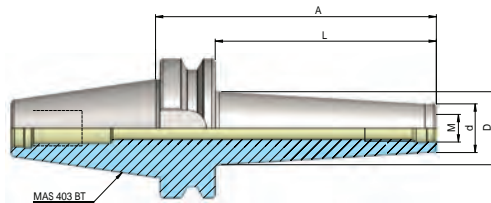
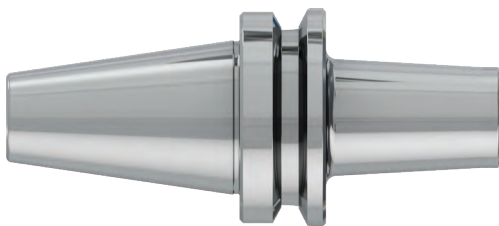
FORM
AD

ISO
7388-2

Artikelbezeichnung Item Code	Produktname Product name	Spannbereich Capacity	d	D	L	A
HEI.B40.0806.52	BT 40 M6 - 52	M6	10	13	25	52
HEI.B40.0806.77	BT 40 M6 - 77	M6	10	28	50	77
HEI.B40.0806.102	BT 40 M6 - 102	M6	10	28	75	102
HEI.B40.0808.52	BT 40 M8 - 52	M8	13	15	25	52
HEI.B40.0808.77	BT 40 M8 - 77	M8	13	23	50	77
HEI.B40.0808.102	BT 40 M8 - 102	M8	13	23	75	102
HEI.B40.0808.127	BT 40 M8 - 127	M8	13	25	100	127
HEI.B40.0810.52	BT 40 M10 - 52	M10	18	20	25	52
HEI.B40.0810.77	BT 40 M10 - 77	M10	18	23	50	77
HEI.B40.0810.102	BT 40 M10 - 102	M10	18	26	75	102
HEI.B40.0810.127	BT 40 M10 - 127	M10	18	29	100	127
HEI.B40.0810.152	BT 40 M10 - 152	M10	18	32	125	152
HEI.B40.0812.52	BT 40 M12 - 52	M12	21	24	25	52
HEI.B40.0812.77	BT 40 M12 - 77	M12	21	27	50	77
HEI.B40.0812.102	BT 40 M12 - 102	M12	21	30	75	102
HEI.B40.0812.127	BT 40 M12 - 127	M12	21	33	100	127
HEI.B40.0812.152	BT 40 M12 - 152	M12	21	36	125	152
HEI.B40.0816.27	BT 40 M16 - 27	M16	29	29	5	27
HEI.B40.0816.52	BT 40 M16 - 52	M16	29	29	25	52
HEI.B40.0816.77	BT 40 M16 - 77	M16	29	32	50	77
HEI.B40.0816.102	BT 40 M16 - 102	M16	29	34	75	102
HEI.B40.0816.127	BT 40 M16 - 127	M16	29	37	100	127
HEI.B40.0816.152	BT 40 M16 - 152	M16	29	40	125	152

BT ARBORS FOR MODULAR (SCREW TYPE) INDEXABLE END MILLS

DIN ISO 7388-2 AD (JIS B 6339 MAS 403 BT)
FRÄSAUFNAHME FÜR EINSCHRAUBFRÄSER



Artikelbezeichnung Item Code	Produktname Product name	Spannbereich Capacity	d	D	L	A
HEI.B50.0808.88	BT 50 M8 - 88	M8	13	23	50	88
HEI.B50.0808.138	BT 50 M8 - 138	M8	13	25	100	138
HEI.B50.0808.188	BT 50 M8 - 188	M8	13	30	150	188
HEI.B50.0810.88	BT 50 M10 - 88	M10	18	23	50	88
HEI.B50.0810.138	BT 50 M10 - 138	M10	18	32	100	138
HEI.B50.0810.188	BT 50 M10 - 188	M10	18	36	150	188
HEI.B50.0812.88	BT 50 M12 - 88	M12	21	24	50	88
HEI.B50.0812.138	BT 50 M12 - 138	M12	21	33	100	138
HEI.B50.0812.188	BT 50 M12 - 188	M12	21	40	150	188
HEI.B50.0816.88	BT 50 M16 - 88	M16	29	34	50	88
HEI.B50.0816.138	BT 50 M16 - 138	M16	29	36	100	138
HEI.B50.0816.188	BT 50 M16 - 188	M16	29	42	150	188