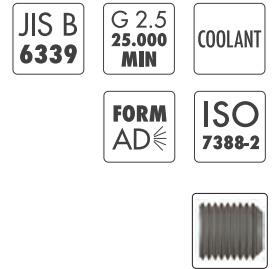
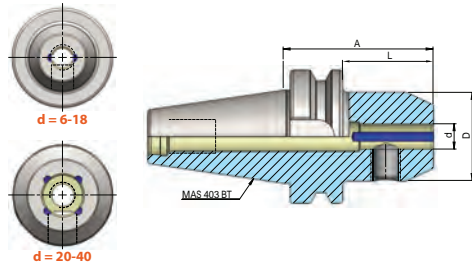
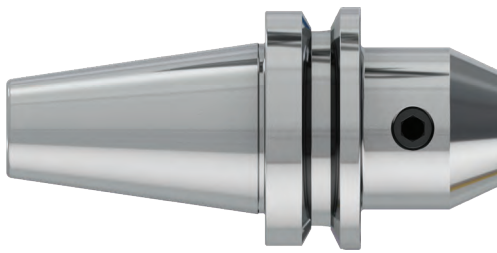


# BT END MILL HOLDER DIN 6359 FOR WELDON DIN 1835-B WITH COOLANT

DIN ISO 7388-2 AD (JIS B 6339 MAS 403 BT)

FRÄSERAUFNAHME DIN 6359 ZYLINDERSCHÄFTE DIN 1835-B MIT KÜHLMITTEL



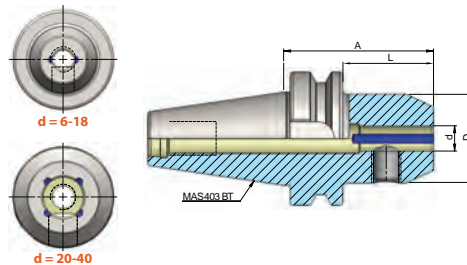
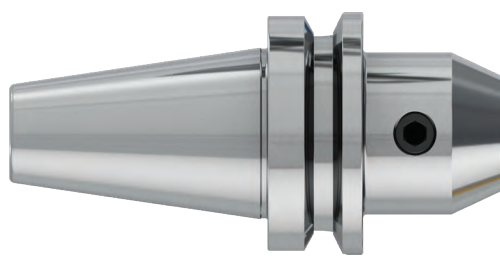
Artikelbezeichnung Item Code	Produktname Product name	Spannbereich Capacity	D	L	A
HEI.B40.0206.50K	BT 40 6 - 50 - K	6	25	23	50
HEI.B40.0206.100K	BT 40 6 - 100 - K	6	25	73	100
HEI.B40.0208.50K	BT 40 8 - 50 - K	8	28	23	50
HEI.B40.0208.100K	BT 40 8 - 100 - K	8	28	73	100
HEI.B40.0210.63K	BT 40 10 - 63 - K	10	35	36	63
HEI.B40.0210.100K	BT 40 10 - 100 - K	10	35	73	100
HEI.B40.0212.63K	BT 40 12 - 63 - K	12	42	36	63
HEI.B40.0212.100K	BT 40 12 - 100 - K	12	42	73	100
HEI.B40.0214.63K	BT 40 14 - 63 - K	14	45	36	63
HEI.B40.0214.100K	BK 40 14 - 100 - K	14	45	73	100
HEI.B40.0216.63K	BT 40 16 - 63 - K	16	48	36	63
HEI.B40.0216.100K	BT 40 16 - 100 - K	16	48	73	100
HEI.B40.0218.63K	BT 40 18 - 63 - K	18	50	36	63
HEI.B40.0218.100K	BT 40 18 - 100 - K	18	50	73	100
HEI.B40.0220.63K	BT 40 20 - 63 - K	20	52	36	63
HEI.B40.0220.100K	BT 40 20 - 100 - K	20	52	73	100
HEI.B40.0225.90K	BT 40 25 - 90 - K	25	63	63	90
HEI.B40.0232.100K	BT 40 32 - 100 - K	32	72	73	100
HEI.B40.0240.120K	BT 40 40 - 120 - K	40	80	93	120

# BT END MILL HOLDER DIN 6359 FOR WELDON DIN 1835-B WITH COOLANT

heikenei.com

DIN ISO 7388-2 AD (JIS B 6339 MAS 403 BT)

FRÄSERAUFNAHME DIN 6359 ZYLINDERSCHÄFTE DIN 1835-B MIT KÜHLMITTEL



JIS B  
6339

G 2.5  
25.000  
MIN

COOLANT

FORM  
AD

ISO  
7388-2



Artikelbezeichnung Item Code	Produktname Product name	Spannbereich Capacity	D	L	A
HEI.B50.0206.63K	BT 50 6 - 63 - K	6	25	25	63
HEI.B50.0206.100K	BT 50 6 - 100 - K	6	25	62	100
HEI.B50.0208.63K	BT 50 8 - 63 - K	8	28	25	63
HEI.B50.0208.100K	BT 50 8 - 100 - K	8	28	62	100
HEI.B50.0210.63K	BT 50 10 - 63 - K	10	35	25	63
HEI.B50.0210.100K	BT 50 10 - 100 - K	10	35	62	100
HEI.B50.0212.80K	BT 50 12 - 80 - K	12	42	42	80
HEI.B50.0212.100K	BT 50 12 - 100 - K	12	42	62	100
HEI.B50.0214.80K	BT 50 14 - 80 - K	14	45	42	80
HEI.B50.0214.100K	BT 50 14 - 100 - K	14	45	62	100
HEI.B50.0216.80K	BT 50 16 - 80 - K	16	48	42	80
HEI.B50.0216.100K	BT 50 16 - 100 - K	16	48	62	100
HEI.B50.0218.80K	BT 50 18 - 80 - K	18	50	42	80
HEI.B50.0218.100K	BT 50 18 - 100 - K	18	50	62	100
HEI.B50.0220.80K	BT 50 20 - 80 - K	20	52	42	80
HEI.B50.0220.100K	BT 50 20 - 100 - K	20	52	62	100
HEI.B50.0225.100K	BT 50 25 - 100 - K	25	65	62	100
HEI.B50.0232.105K	BT 50 32 - 105 - K	32	72	67	105
HEI.B50.0240.110K	BT50 40 - 110 - K	40	80	72	110