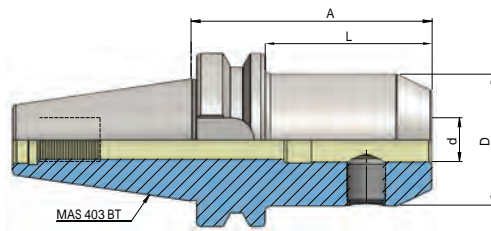
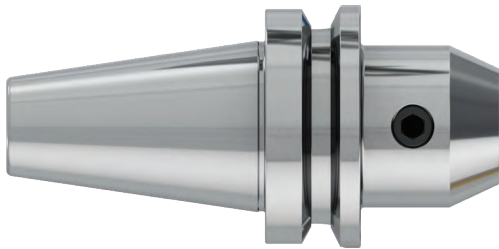


BT END MILL HOLDER DIN 6359 FOR WELDON DIN 1835-B

DIN ISO 7388-2 AD (JIS B 6339 MAS 403 BT)

FRASERAUFNAHME DIN 6359 ZYLINDERSCHAFFTE DIN 1835-B



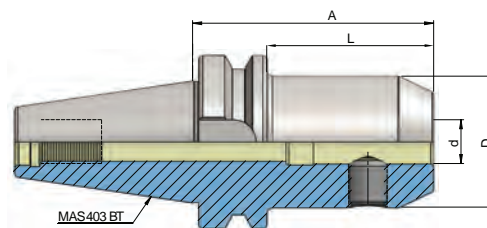
Artikelbezeichnung Item Code	Produktname Product name	Spannbereich Capacity	D	L	A
HEI.B30.0206.50	BT 30 6 - 50	6	25	28	50
HEI.B30.0208.50	BT 30 8 - 50	8	28	28	50
HEI.B30.0210.50	BT 30 10 - 50	10	35	28	50
HEI.B30.0212.50	BT 30 12 - 50	12	42	28	50
HEI.B30.0214.50	BT 30 14 - 50	14	44	28	50
HEI.B30.0216.63	BT 30 16 - 63	16	48	41	63
HEI.B30.0218.63	BT 30 18 - 63	18	50	41	63
HEI.B30.0220.63	BT 30 20 - 63	20	52	41	63
HEI.B40.0206.50	BT 40 6 - 50	6	25	23	50
HEI.B40.0206.100	BT 40 6 - 100	6	25	73	100
HEI.B40.0206.130	BT 40 6 - 130	6	25	103	130
HEI.B40.0206.160	BT 40 6 - 160	6	25	133	160
HEI.B40.0208.50	BT 40 8 - 50	8	28	23	50
HEI.B40.0208.100	BT 40 8 - 100	8	28	73	100
HEI.B40.0208.130	BT 40 8 - 130	8	28	103	130
HEI.B40.0208.160	BT 40 8 - 160	8	28	133	160
HEI.B40.0210.63	BT 40 10 - 63	10	35	36	63
HEI.B40.0210.100	BT 40 10 - 100	10	35	73	100
HEI.B40.0210.130	BT 40 10 - 130	10	35	103	130
HEI.B40.0210.160	BT 40 10 - 160	10	35	133	160
HEI.B40.0212.63	BT 40 12 - 63	12	42	36	63
HEI.B40.0212.100	BT 40 12 - 100	12	42	73	100
HEI.B40.0212.130	BT 40 12 - 130	12	42	103	130
HEI.B40.0212.160	BT 40 12 - 160	12	42	133	160
HEI.B40.0214.63	BT 40 14 - 63	14	45	36	63
HEI.B40.0214.100	BT 40 14 - 100	14	45	73	100
HEI.B40.0214.160	BT 40 14 - 160	14	45	133	160

BT END MILL HOLDER DIN 6359 FOR WELDON DIN 1835-B

heikenei.com

DIN ISO 7388-2 AD (JIS B 6339 MAS 403 BT)

FRÄSERAUFNAHME DIN 6359 ZYLINDERSCHÄFTE DIN 1835-B



JIS B
6339

G 2.5
25.000
MIN

FORM
AD

ISO
7388-2

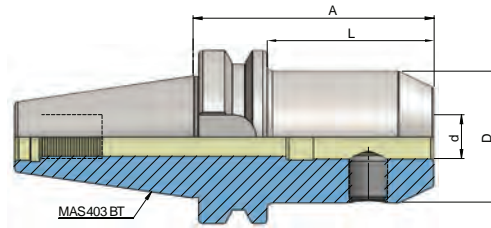
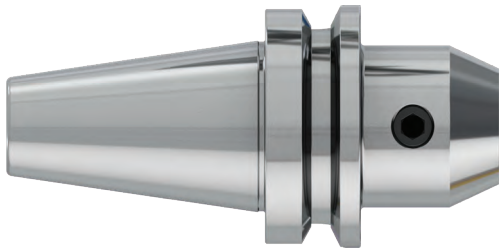


Artikelbezeichnung Item Code	Produktname Product name	Spannbereich Capacity	D	L	A
HEI.B40.0216.35	BT 40 16 - 35	16	45	8	35
HEI.B40.0216.63	BT 40 16 - 63	16	48	36	63
HEI.B40.0216.100	BT 40 16 - 100	16	48	73	100
HEI.B40.0216.130	BT 40 16 - 130	16	48	103	130
HEI.B40.0216.160	BT 40 16 - 160	16	48	133	160
HEI.B40.0218.63	BT 40 18 - 63	18	50	36	63
HEI.B40.0218.100	BT 40 18 - 100	18	50	73	100
HEI.B40.0218.160	BT 40 18 - 160	18	50	133	160
HEI.B40.0220.35	BT 40 20 - 35	20	45	8	35
HEI.B40.0220.63	BT 40 20 - 63	20	52	36	63
HEI.B40.0220.100	BT 40 20 - 100	20	52	73	100
HEI.B40.0220.130	BT 40 20 - 130	20	52	103	130
HEI.B40.0220.160	BT 40 20 - 160	20	52	133	160
HEI.B40.0225.35	BT 40 25 - 35	25	45	8	35
HEI.B40.0225.90	BT 40 25 - 90	25	63	63	90
HEI.B40.0225.160	BT 40 25 - 160	25	63	133	160
HEI.B40.0232.65	BT 40 32 - 65	32	63	38	65
HEI.B40.0232.100	BT 40 32 - 100	32	72	73	100
HEI.B40.0232.160	BT 40 32 - 160	32	72	133	160
HEI.B40.0240.120	BT 40 40 - 120	40	80	93	120

BT END MILL HOLDER DIN 6359 FOR WELDON DIN 1835-B

DIN ISO 7388-2 AD (JIS B 6339 MAS 403 BT)

FRÄSERAUFNAHME DIN 6359 ZYLINDERSCHÄFTE DIN 1835-B



JIS B
6339

G 2.5
25.000
MIN

FORM
AD

ISO
7388-2



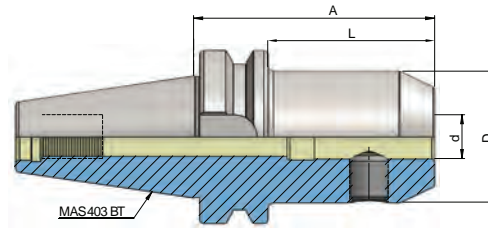
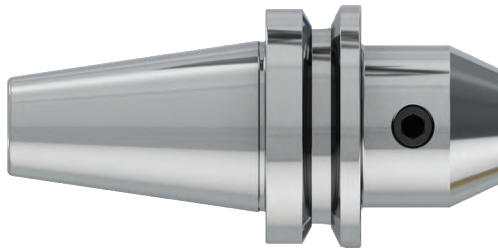
Artikelbezeichnung Item Code	Produktname Product name	Spannbereich Capacity	D	L	A
HEI.B50.0206.63	BT 50 6 - 63	6	25	25	63
HEI.B50.0206.100	BT 50 6 - 100	6	25	62	100
HEI.B50.0206.130	BT 50 6 - 130	6	25	92	130
HEI.B50.0206.160	BT 50 6 - 160	6	25	122	160
HEI.B50.0208.63	BT 50 8 - 63	8	28	25	63
HEI.B50.0208.100	BT 50 8 - 100	8	28	62	100
HEI.B50.0208.130	BT 50 8 - 130	8	28	92	130
HEI.B50.0208.160	BT 50 8 - 160	8	28	122	160
HEI.B50.0210.63	BT 50 10 - 63	10	35	25	63
HEI.B50.0210.100	BT 50 10 - 100	10	35	62	100
HEI.B50.0210.130	BT 50 10 - 130	10	35	92	130
HEI.B50.0210.160	BT 50 10 - 160	10	35	122	160
HEI.B50.0212.80	BT 50 12 - 80	12	42	42	80
HEI.B50.0212.100	BT 50 12 - 100	12	42	62	100
HEI.B50.0212.130	BT 50 12 - 130	12	42	92	130
HEI.B50.0212.160	BT 50 12 - 160	12	42	122	160
HEI.B50.0214.80	BT 50 14 - 80	14	45	42	80
HEI.B50.0214.100	BT 50 14 - 100	14	45	92	100
HEI.B50.0214.160	BT 50 14 - 160	14	45	122	160
HEI.B50.0216.80	BT 50 16 - 80	16	48	42	80
HEI.B50.0216.100	BT 50 16 - 100	16	48	62	100
HEI.B50.0216.130	BT 50 16 - 130	16	48	92	130
HEI.B50.0216.160	BT 50 16 - 160	16	48	122	160

BT END MILL HOLDER DIN 6359 FOR WELDON DIN 1835-B

heikenei.com

DIN ISO 7388-2 AD (JIS B 6339 MAS 403 BT)

FRÄSERAUFNAHME DIN 6359 ZYLINDERSCHÄFTE DIN 1835-B



JIS B
6339

G 2.5
25.000
MIN

FORM
AD

ISO
7388-2



Artikelbezeichnung Item Code	Produktname Product name	Spannbereich Capacity	D	L	A
HEI.B50.0218.80	BT 50 18 - 80	18	50	42	80
HEI.B50.0218.100	BT 50 18 - 100	18	50	62	100
HEI.B50.0218.160	BT 50 18 - 160	18	50	122	160
HEI.B50.0220.80	BT 50 20 - 80	20	52	42	80
HEI.B50.0220.100	BT 50 20 - 100	20	52	62	100
HEI.B50.0220.130	BT 50 20 - 130	20	52	92	130
HEI.B50.0220.160	BT 50 20 - 160	20	52	122	160
HEI.B50.0225.100	BT 50 25 - 100	25	65	62	100
HEI.B50.0225.130	BT 50 25 - 130	25	65	92	130
HEI.B50.0225.160	BT 50 25 - 160	25	65	122	160
HEI.B50.0232.105	BT 50 32 - 105	32	72	67	105
HEI.B50.0232.160	BT 50 32 - 160	32	72	122	160
HEI.B50.0240.110	BT 50 40 - 110	40	80	72	110
HEI.B50.0240.160	BT 50 40 - 160	40	80	122	160