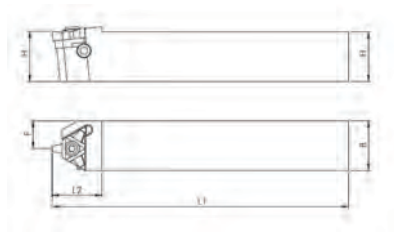


SER ZCC

Indexable Compability: ZCC

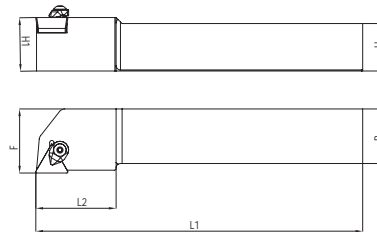
heikenei.com



Item Code	Stock		Dimension mm								Spare Parts		
	R	L	H1	H	B	F	L1	L2	λS	γ0	Insert	Screw	Torx
22/27	•	•	25	25	14	150	40	-5.5	0	22	4,5X17	T20	
HEI.1409300	•	•	25	25	16	150	40	-5.5	0	27	5X17	T20	
HEI.1375200	•	•	32	32	22	170	40	-5.5	0	22	4,5X17	T20	

CTGPR

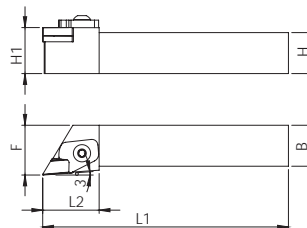
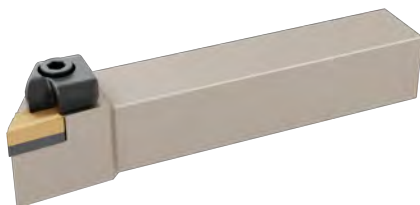
Indexable Compability: ISO



Item Code	Stock		Dimension mm								Spare Parts				
	R	L	H1	H	B	F	L1	L2	λS	γ0	Insert	Shim	Screw	Clamp	Screw
TP..	•	○	16	16	16	100	30	-6	-6	TP..1103	-	-	TP11	M5X12	A3
HEI.1037900	•	○	16	16	20	100	30	-6	-6	TP..1603	-	-	-	M5X12	A3
HEI.1038000	•	○	20	20	25	125	35	-6	-6	TP..1603	TP16	M5X12	TP16	M5X12	A3
HEI.1038100	•	○	25	25	32	150	40	-6	-6	TP..1603	TP16	M5X12	TP16	M5X12	A3
HEI.1038200	•	○	25	25	32	150	40	-6	-6	TP..2204	-	-	TP22	M5X12	A4
HEI.1038300	•	○	25	25	32	150	40	-6	-6	TP..2204	-	-	TP22	M5X12	A4

CKJNR

Indexable Compability: ISO



Item Code	Stock		Dimension mm								Spare Parts				
	R	L	H1	H	B	F	L1	L2	λS	γ0	Insert	Shim	Screw	Clamp	Screw
KNUX	•	•	20	20	25	125	35	-6	-6	KNUX 1604..	KN..016	M3X10	C160105	M6X22	A5
HEI.1038600	•	•	25	25	32	150	40	-6	-6	KNUX 1604..	KN..016	M3X10	C160105	M6X22	A5
HEI.1038700	•	•	32	32	40	170	40	-6	-6	KNUX 1604..	KN..016	M3X10	C160105	M6X22	A5
HEI.1038800	•	•	40	40	50	200	45	-6	-6	KNUX 1604..	KN..016	M3X10	C160105	M6X22	A5