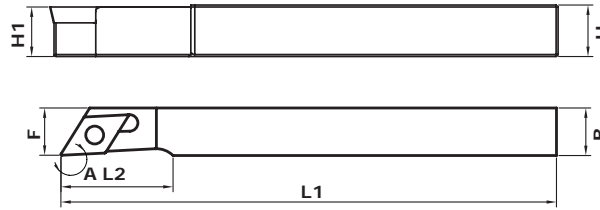


SDACL SWISS

Indexable Compability: ISO



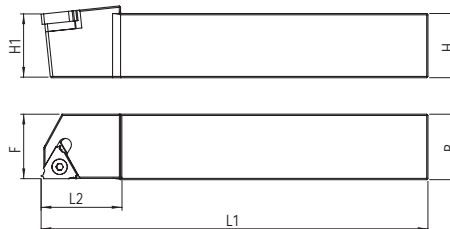
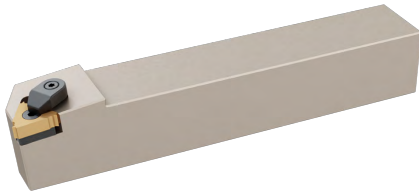
AVAILABLE SOON



Item Code	Stock		Dimension mm								Spare Parts			
	R	L	H1	H	B	F	L1	L2	A	λS	$\square O$	Insert	Screw	Torx
HEI.1035100OT	•	•	12	12	12	12	125	24	24	90	0	DC.T 11TC..	M3,5X9	T15
HEI.1035200OT	•	•	12	12	12	12	125	24	24	90	0	DC.T 11TC..	M3,5X9	T15
HEI.1035300OT	•	•	12	12	12	12	125	24	24	90	0	DC.T 11TC..	M3,5X9	T15
HEI.1028600OT	•	•	12	12	12	12	125	24	24	90	0	DC.T 11TC..	M3,5X9	T15
HEI.1027700OT	•	•	12	12	12	12	125	24	24	90	0	DC.T 11TC..	M3,5X9	T15
HEI.1543900OT	•	•	16	16	12	12	125	24	24	90°	0	DC.T 11TC..	M3,5X9	T15
HEI.1543800OT	•	•	16	16	12	12	125	24	24	90°	0	DC.T 11TC..	M3,5X9	T15
HEI.1606000	•	•	12	12	12	12	125	24	24	90°	0	DC.T 11TC..	M3,5X9	T15

SER ISO

Indexable Compability: ISO



Item Code	Stock		Dimension mm								Spare Parts						
	R	L	H1	H	B	F	L1	L2	λS	γO	Insert	Shim	Screw	Screw	Torx	Clamp	Screw
HEI.1035700	•	•	12	12	12	12	100	20	-5.5	0	11 ER/L	-	-	M2,5X7	T08	-	-
HEI.1035800	•	•	12	12	12	12	100	20	-5.5	0	16 ER/L	ER/L..016	M5X0.5XM3.5	M3,5X14	T15	CK15	M3,5x9
HEI.1035900	•	•	16	16	16	16	100	30	-5.5	0	11 ER/L	-	-	M2,5X7	T08	-	-
HEI.1036000	•	•	16	16	16	125	30	-5.5	0	16 ER/L	ER/L..016	M5X0.5XM3.5	M3,5X14	T15	CK15	M4x12	
HEI.1036100	•	•	20	20	20	125	35	-5.5	0	16 ER/L	ER/L..016	M5X0.5XM3.5	M3,5X14	T15	CK15	M4x12	
HEI.1036200	•	•	25	25	25	150	40	-5.5	0	16 ER/L	ER/L..016	M5X0.5XM3.5	M3,5X14	T15	CK15	M4x12	
HEI.1036300	•	•	25	25	25	150	40	-5.5	0	22 ER/L	ER/L..022	-	M4X17	T15	-	-	
HEI.1036400	•	•	32	32	32	170	40	-5.5	0	16 ER/L	ER/L..016	M5X0.5XM3.5	M3,5X14	T15	CK15	M4x12	
HEI.1036500	•	•	32	32	32	170	40	-5.5	0	22 ER/L	ER/L..022	-	M4X15	T15	-	-	