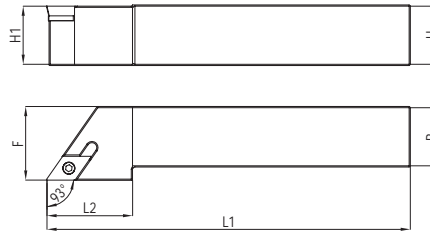
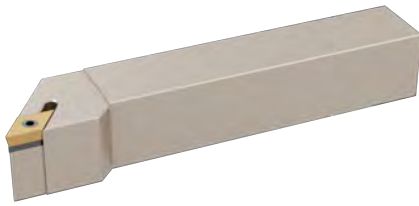


SDJCR

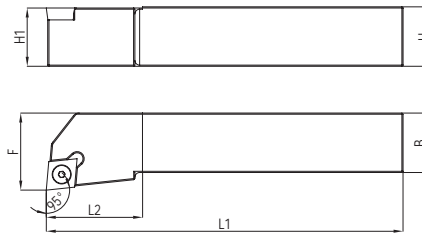
Indexable Compability: ISO



Item Code	Stock		Dimension mm								Spare Parts				
	R	L	H1	H	B	F	L1	L2	λ S	γ 0	Insert	Shim	Screw	Screw	Torx
HEI.1028600	•	•	8	8	10	100	16	0	0	DC.T 0702..	-	-	M2,5X7	T08	
HEI.1028700	•	•	10	10	12	100	16	0	0	DC.T 0702..	-	-	M2,5X7	T08	
HEI.1028800	•	•	12	12	16	100	20	0	0	DC.T 0702..	-	-	M2,5X7	T08	
HEI.1028900	•	•	16	16	20	100	25	0	0	DC.T 0702..	-	-	M2,5X7	T08	
HEI.1029000	•	•	16	16	20	100	25	0	0	DC.T 11T3..	DC..011	M5X0.5XM3.5	M3,5X14	T15	
HEI.1029100	•	•	20	20	25	125	35	0	0	DC.T 11T3..	DC..011	M5X0.5XM3.5	M3,5X14	T15	
HEI.1029200	•	•	25	25	32	150	40	0	0	DC.T 11T3..	DC..011	M5X0.5XM3.5	M3,5X14	T15	
HEI.1029300	•	•	32	32	40	170	40	0	0	DC.T 11T3..	DC..011	M5X0.5XM3.5	M3,5X14	T15	

SCLCR

Indexable Compability: ISO



Item Code	Stock		Dimension mm								Spare Parts				
	R	L	H1	H	B	F	L1	L2	λ S	γ 0	Insert	Shim	Screw	Screw	Torx
HEI.1304900	•	•	8	8	10	100	20	-10	0	CC.T 0602..	-	-	M2,5X5	T8	
HEI.1305000	•	•	10	10	12	100	20	-10	0	CC.T 0602..	-	-	M2,5X5	T8	
HEI.1305100	•	•	12	12	15	100	20	-10	0	CC.T 0602..	-	-	M2,5X5	T8	
HEI.1305200	•	•	16	16	20	100	25	-8	0	CC.T 0602..	-	-	M2,5X5	T8	
HEI.1305300	•	•	16	16	20	100	25	-8	0	CC.T 09T3..	-	-	M3,5X8	T15	
HEI.1305400	•	•	20	20	25	125	35	-8	0	CC.T 09T3..	-	-	M3,5X8	T15	
HEI.1305500	•	•	25	25	32	150	35	-8	0	CC.T 09T3..	-	-	M3,5X8	T15	
HEI.1305600	•	•	16	16	20	100	25	-8	0	CC.T 1204..	CC..12	M6XM4	M4X14	T15	
HEI.1305700	•	•	20	20	25	125	35	-8	0	CC.T 1204..	CC..12	M6XM4	M4X14	T15	
HEI.1305800	•	•	25	25	32	150	35	-8	0	CC.T 1204..	CC..12	M6XM4	M4X14	T15	
HEI.1305900	•	•	32	32	40	170	40	-8	0	CC.T 1204..	CC..12	M6XM4	M4X14	T15	
HEI.1306000	•	•	12	12	15	100	20	-8	0	CC.T 09T3..	-	-	M3,5X8	T15	